

dutch delight

A designer duo bring their playful vintage style to the fore with a home and workspace that's become a personal cabinet of curiosity

WORDS **TINA HOM/LIVING AGENCY** STYLING **STUDIO BOOT** PHOTOGRAPHY **JEAN-MARC WULLSCHLEGER/LIVING AGENCY**



cheat sheet

Who lives here: Petra Janssen and Edwin Vollebergh, founders of Dutch graphic design company Studio Boot. Their sons Jan (18) and Piet (16) have separate quarters within the building.

Style of house: An 1100-sqm converted smash repairs garage in 's-Hertogenbosch, an hour south of Amsterdam in the Netherlands.



DINING AREA Owners Petra and Edwin called upon Dutch designer Piet Hein Eek to create the 21-metre-long display unit that's filled with curios. He put together this one-of-a-kind piece from old windows and doors he had collected.



Looking for a space where work and home could sit side by side, partners in work and life Petra and Edwin were at a party when they heard talk of an old car workshop on the market. The couple went to take a look and fell in love with the light streaming in through the glass roof. “The place was completely run down and had been neglected for decades but we saw the potential of the huge space,” says Petra. “We took the initiative to call the owner and, four days later, it was ours. We were very lucky!”

After six months of drawing up plans and wrangling approvals, it took another year and a half for Edwin, Petra and their team of craftspeople to transform the 1100-square-metre workshop.

“We left the space open as long as possible so we could observe it and avoid making the wrong decisions,” says Petra of the building process. The ground floor hosts the kitchen and dining area, as well as two adjoining work rooms for Petra and Edwin’s creative design business, Studio Boot. On the first floor is a huge open living room and TV room; and the couple’s bedroom and bathroom are at the top on the second floor.

In order to keep the provenance of the building alive, Petra and Edwin tried to recycle as much as possible. They renovated the metal structure and, with designer Piet Hein Eek’s help, restored the glass ceiling and framing over the entrance hall. As each beam was taken out, it was inspected to see if it could be re-used. Once the frame was reinstated, it was sprayed in grey paint for a uniform look.

Another recycling challenge was to install the long radiators Edwin reclaimed from an old hospital, and restore the sky-blue kitchen unit, which used to be an old laboratory bench. “Our craftsmen didn’t understand why we couldn’t just buy new fittings and new radiators!” says Petra.

“Finding the proper place for each piece of furniture was challenging in this open space, so we had to take our time,” says Petra. “The three-metre-wide chest in the kitchen doesn’t actually look so big and the oversized dining table fits the area perfectly, as does the army jeep (pictured, left, with the couple) in the hall.”

Petra and Edwin describe themselves as collectors. “Objects deserve a second life,” says Petra. “We never throw things away.” To wit, their collection of antlers. “Fifteen years ago, nobody wanted them and today, they are expensive and almost impossible to find,” says Edwin. “The same goes for the vintage sofas, the Iranian carpet... we’ve had them all for more than a decade.” For Petra, the completed house “gives us our freedom, is very generous and fits exactly with our life”.

For more information on Studio Boot, visit studioboot.nl.

“In order to keep the memory of the original building alive, we recycled as much as possible”

PETRA JANSSEN, HOMEOWNER

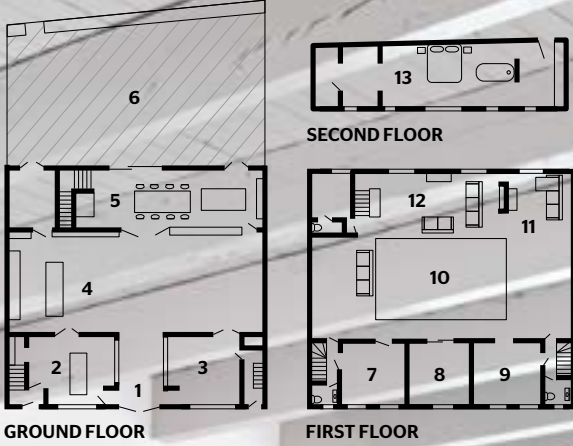


star performer

Petra and Edwin have given preloved wares - that offer character and charm - new life in their home. An example is this kitchen unit, which was once a laboratory bench.

EXTERIOR (opposite) Petra and Edwin restored and painted the facade. The tiled lettering was revealed during the cleaning process. The doors are restored originals, which now slide into the walls. **KITCHEN/ DINING AREA** Piet Hein Eek’s bespoke cabinetry houses a neon-green cooker, wine cellar, fridges and plenty of display storage. The old school bell is rung to call Petra and Edwin’s sons when dinner is ready.

LIVING AREA The upper floor is a kind of loft space defined by a custom-made Herman van Esch metal balustrade, which offers a view over the entry hall. The glass roof was completely restored, while the white metal lamp by Leo Coolen was originally designed for the Dutch royal family's orangerie. Hans Olsen leather sofas sit around a vintage Moldavian rug (**opposite**) and a square bench found on the street and reupholstered in ostrich leather. The cabinet and portraits were bought at auction.



ARTWORK (CENTRE PORTRAIT) JOS VAN UUTRECHT



bright idea

The herringbone oak floor took three weeks to fit. For a similar feel, try Havwoods' flooring range, havwoods.com.au.

MASTER SUITE The Chinese screen in Petra and Edwin's open-plan attic bedroom and bathroom was found at auction. A blue floating wall behind the bath (**opposite**) is painted with high-gloss paint and hides a toilet, shower and double sink from view. Across the far wall, a custom-made chest of drawers means the area can be kept permanently clutter-free.

“Finding the proper place for each piece of furniture was challenging in this open space, so we had to take our time”

PETRA JANSSEN, HOMEOWNER

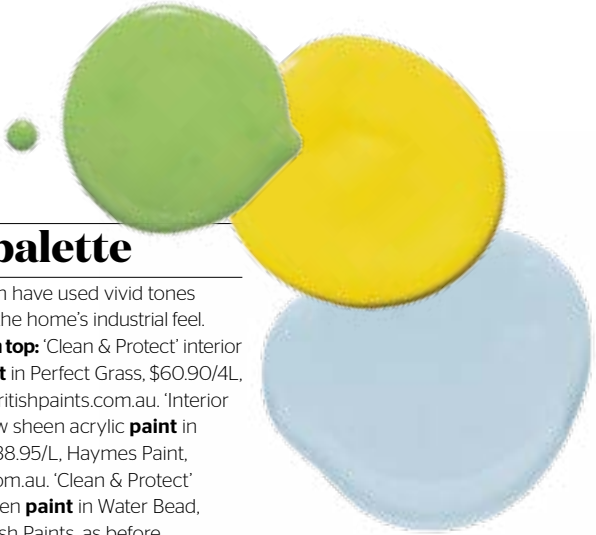


PAINT PALETTE: AND 5 GREAT FINDS: PRODUCT SOURCING: DANIELLE SELIG. PAINT COLOUR MAY VARY ON APPLICATION. PORTRAIT: SAM MCADAM. COOPER



“A bright palette and an eclectic mix of pieces bring a playful vibe to this home”

JOSEPH GARDNER, MARKET EDITOR



paint palette

Petra and Edwin have used vivid tones to brighten up the home's industrial feel. **Clockwise from top:** 'Clean & Protect' interior low sheen **paint** in Perfect Grass, \$60.90/4L, British Paints, britishpaints.com.au. 'Interior Expressions' low sheen acrylic **paint** in Texas Yellow, \$38.95/L, Haymes Paint, haymespaint.com.au. 'Clean & Protect' interior low sheen **paint** in Water Bead, \$56.90/4L, British Paints, as before.

5 GREAT FINDS



1

Vitra 'Panton' **chair**, \$465, Space Furniture, spacefurniture.com.au.

3

Tom Dixon 'Copper' **lampshade**, from \$649, Dedee, dedee.com.

2

Asiatides 'Lotus' garden **stool**, \$259, Meizai, meizai.com.au.



4

Silver-leaf four-panel **screen** with birds and flowers, \$3840, Cromwell, cromwellaustralia.com.au.



5

Getama Hans Wegner 'Plank' **sofa**, \$8500, Great Dane, greatdaneurniture.com.

